

# FOR LEASE

COMMERCIAL / RETAIL  
Long Term Ground Lease Available

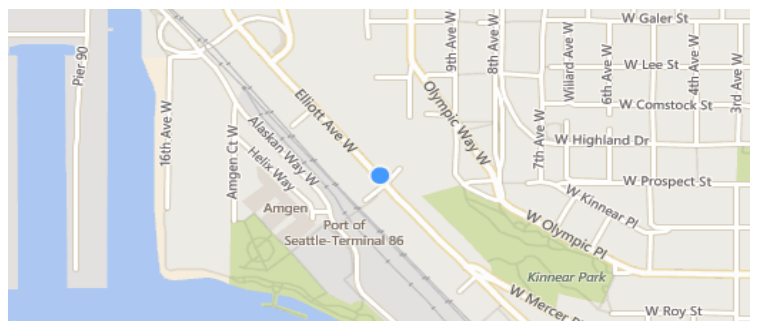
# QUEEN ANNE BLDG

1110 Elliot Ave West  
Seattle, WA 98118



## PROPERTY & BUILDING FEATURES

- Total Space Available = 9,366 SF
- Long Term Ground Lease Available
- Build to Suit
- Lot Size # 29,176 SF or .67 Acres
- Zoning: IC - 45
- \$2.25 PSF + NNN's
- 3 Minutes to Downtown Seattle
- Two Story Building
- Located on Busy Queen Anne Ave
- 50,000+ VPD
- Parking and Street Signage



**CCM Commercial**

Commercial Real Estate Services

**Cal C. Mitchell**

- (425) 922-2886 Cell
- [Cal@ccmcommercial.com](mailto:Cal@ccmcommercial.com)

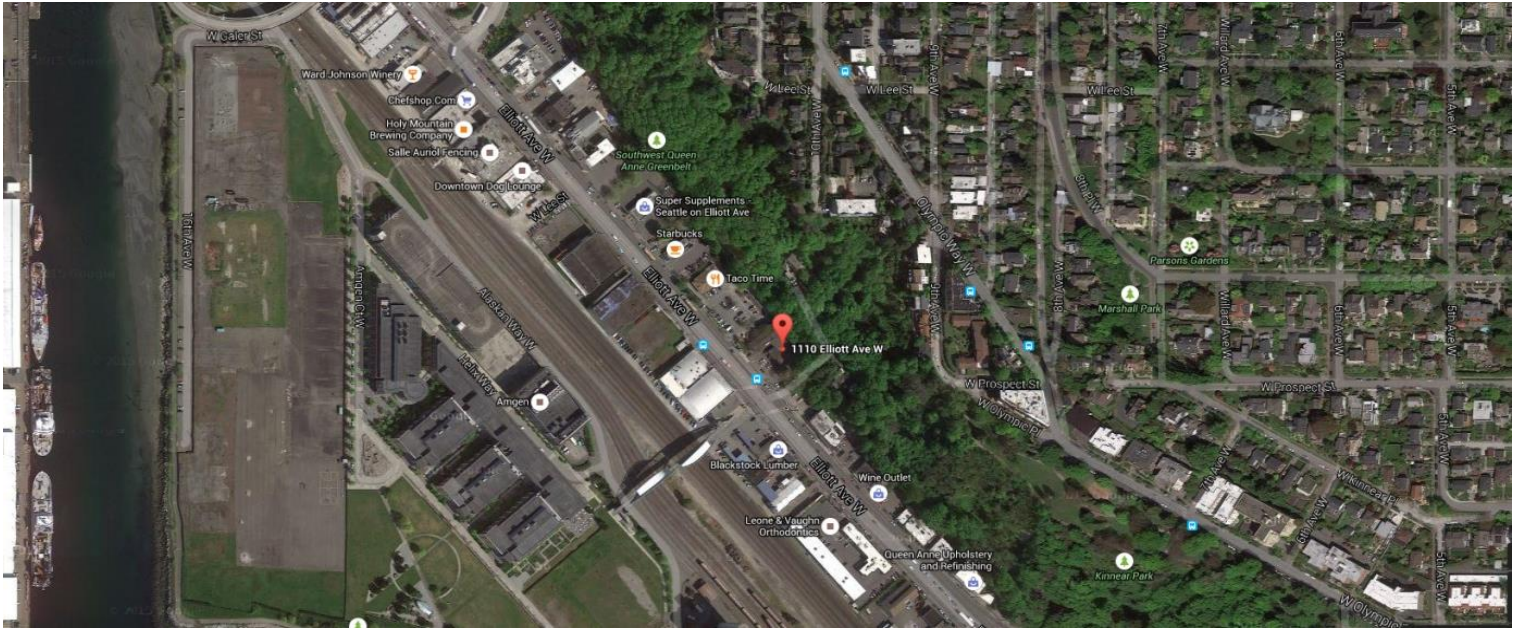


The information contained herein has been obtained from reliable sources but is not guaranteed. A prospective Buyer/ Tenant should verify each item relating to this property and all information contained herein.

**FOR LEASE**  
COMMERCIAL / RETAIL  
Long Term Ground Lease Available

# QUEEN ANNE BLDG

1110 Elliot Ave West  
Seattle, WA 98118



**CCM Commercial**  
Commercial Real Estate Services

**Cal C. Mitchell**

- (425) 922-2886 Cell
- [Cal@ccmcommercial.com](mailto:Cal@ccmcommercial.com)



The information contained herein has been obtained from reliable sources but is not guaranteed. A prospective Buyer/ Tenant should verify each item relating to this property and all information contained herein.