

MOUNTLAKE TERRACE PROFESSIONAL CENTER

6405 218th St SW, Mountlake Terrace, WA 98043

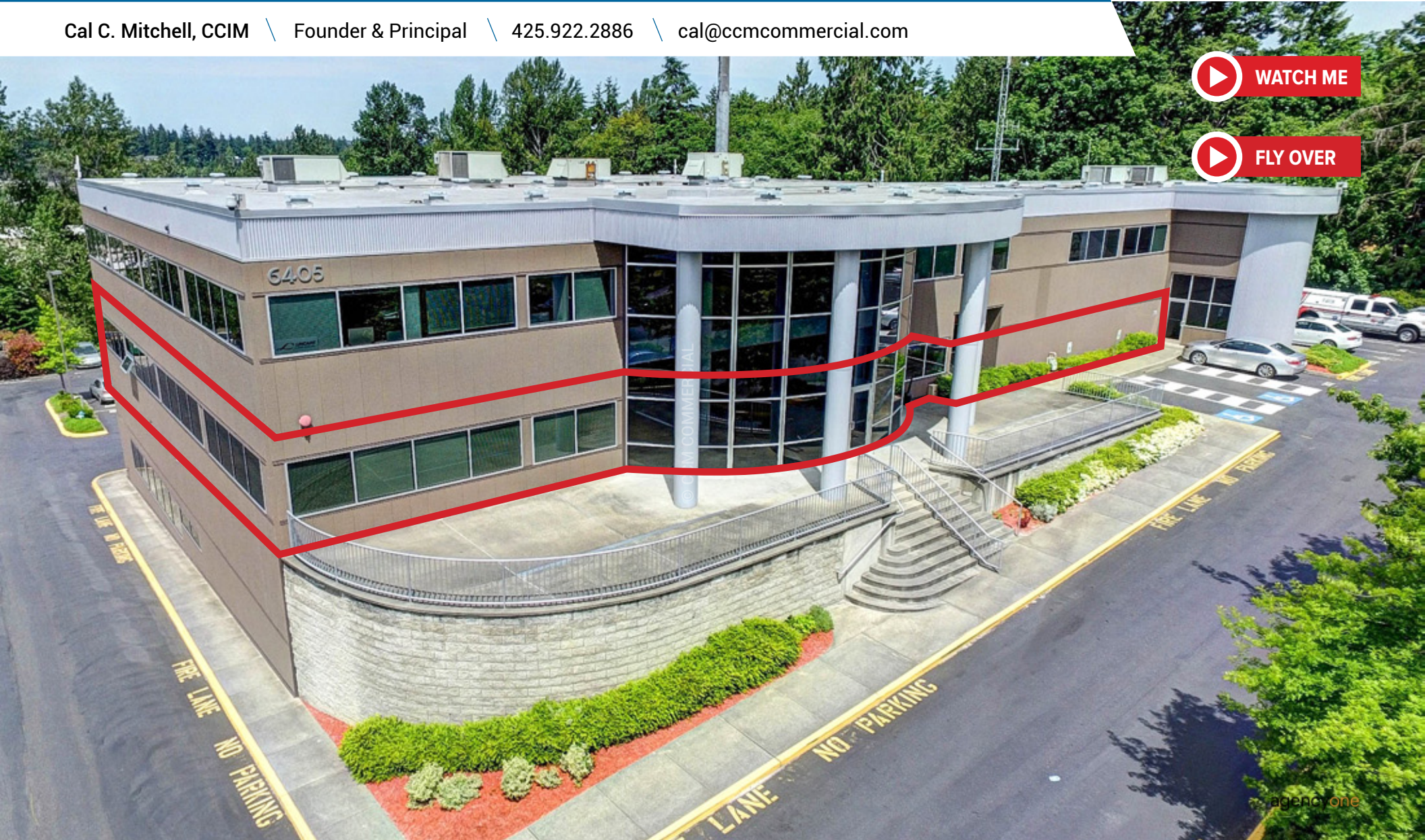
FOR LEASE: **Suite 201A & 201B** \ 3,322 SF – 8,196 SF



CCM Commercial

Commercial Real Estate Services

Cal C. Mitchell, CCIM \ Founder & Principal \ 425.922.2886 \ cal@ccmcommercial.com



PROPERTY ADDRESS

MOUNTLAKE TERRACE PROFESSIONAL CENTER

6405 218th St SW

FOR LEASE: Suites 201A & 201B

Mountlake Terrace, WA 98043

EXCLUSIVE LISTING BROKER

Cal C. Mitchell, CCIM



Founder & Principal

CCM Commercial Real Estate Services

Hello 425.922.2886

Email cal@ccmcommercial.com

TOURS & INQUIRIES

For ALL tours and inquiries, call or text Cal C. Mitchell at 425.922.2886.

Please do not contact Ownership directly, or disturb employees / tenants.

No tours allowed without appointment and without Listing Agent present.

DISCLAIMER & COPYRIGHT NOTICES

This proprietary Marketing Brochure has been exclusively created / prepared by CCM Commercial Real Estate Services for business / property marketing and advertising purposes. CCM Commercial Real Estate Services makes no guarantees, representations or warranties of any kind, express or implied, regarding the accuracy or completeness of the information provided and contained within this document. All interested parties and / or their agent(s) are advised to research and verify all information provided herein, and to conduct their own investigations.

ALL PHOTOS, GRAPHICS, VIDEOS, DIAGRAMS, AND ILLUSTRATIONS contained within this Marketing Brochure are exclusively created, copyrighted and owned by CCM Commercial Real Estate Services—unless otherwise noted. No photos, graphics, videos, diagrams, and illustrations contained herein this document may be duplicated, re-purposed, re-distributed, or extricated from this document, for any other uses (print or digital) without the party first receiving prior, written consent and authorization from Cal C. Mitchell of CCM Commercial Real Estate Services. This copyright notice shall remain in effect even in the instance CCM Commercial Real Estate Services representation of this property expires.

FOR LEASE OPPORTUNITY



MOUNTLAKE TERRACE PROFESSIONAL CENTER

The is a well established medical and professional mixed-use building. Elegant architecture with welcoming steps leading to a grand front entrance. Abundance of FREE parking. Multiple on-site amenities. 25,000+ VPD. Plenty of amenities nearby. Minutes to I-5 & HWY 99.

FOR LEASE

- SUITE 201A: 3,322 SF
- SUITE 201B: 4,874 SF
- SUITE 201A & 201B: 8,196 SF (Demisable)

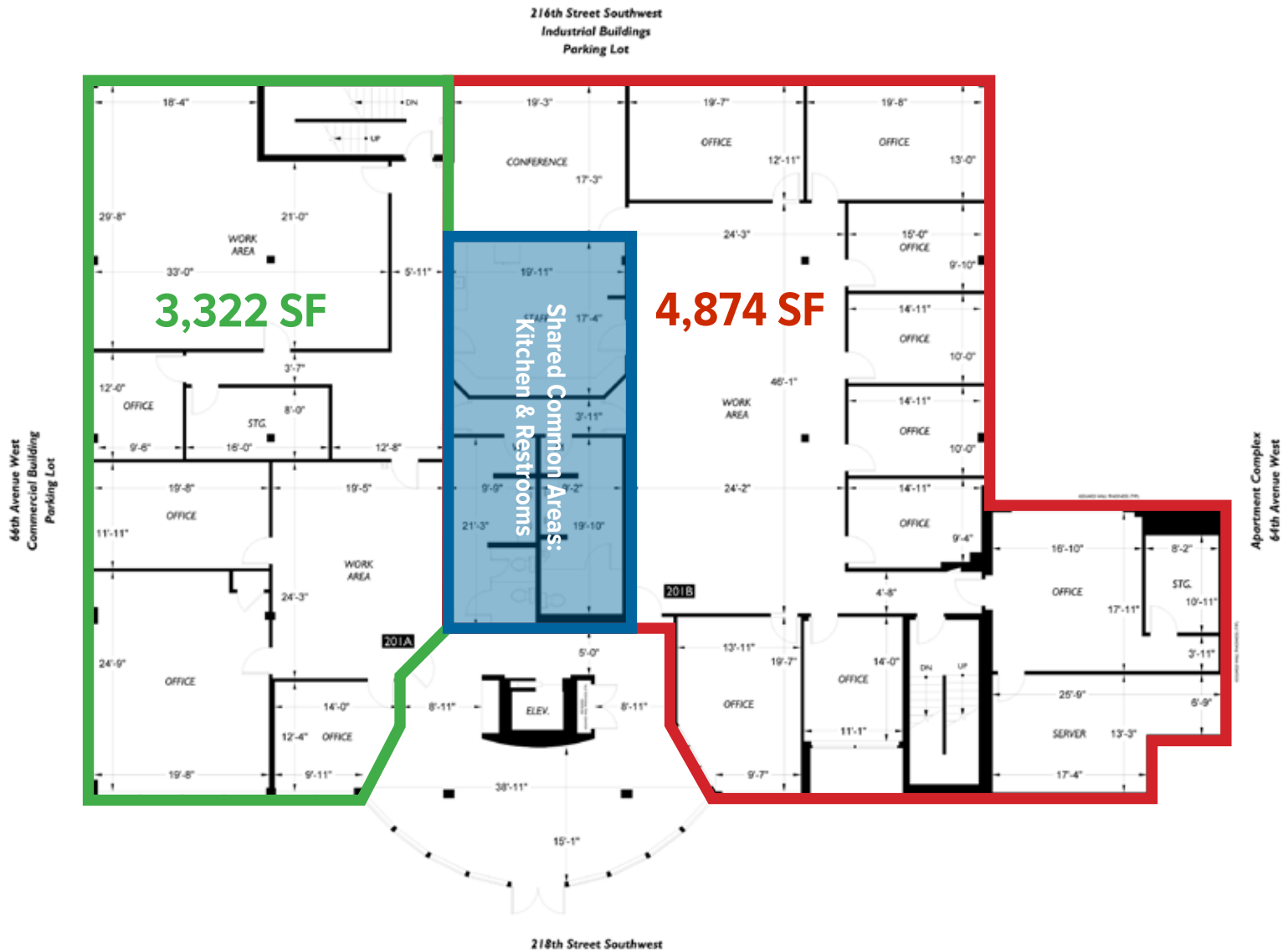
PROPERTY / BUSINESS FEATURES

- Class A — Medical / Dental / Professional Office Space
- Centrally Located Common Area Kitchen
- Building & Monument signage available
- Abundant FREE PARKING all around
- Multiple Local Amenities Nearby
- Excellent Street Visibility
- Premier North Seattle Location
- 25,000+ VPD (Vehicles Per Day)

TOUR INSTRUCTIONS

- Please call Cal at 425.922.2886 to Schedule Tours
- No Tours Without Listing Agent Present
- Do Not Contact or Disturb Employees

FLOOR PLAN—SUITE 201A (3,322 SF) & SUITE 201B (4,874 SF)



AERIAL VIEWS



AERIAL VIEWS CON'T.



EXTERIOR BUILDING VIEWS



EXTERIOR BUILDING VIEWS CON'T.



FREE PARKING ALL AROUND BUILDING



NEIGHBORHOOD DEMOGRAPHICS

Demographics

Population

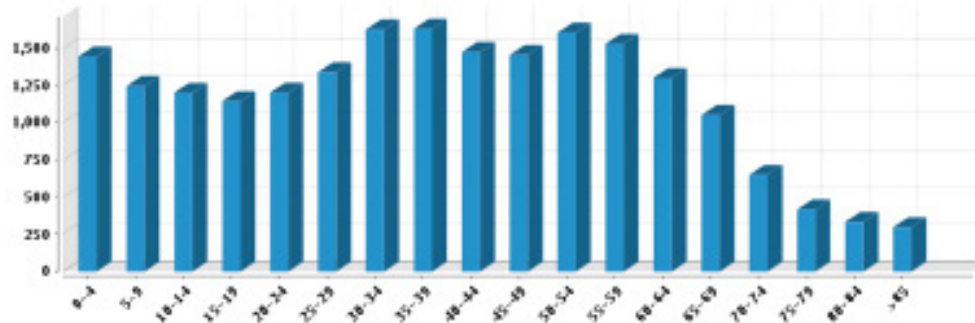
Summary

Estimated Population:	20,914
Population Growth (since 2010):	5%
Population Density (pp / mile):	5,124
Median Age:	38.89

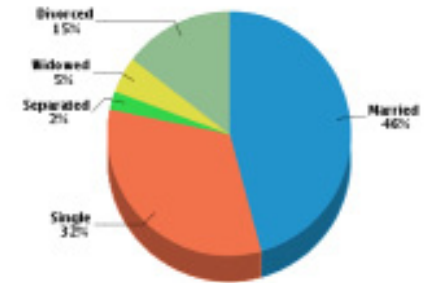
Household

Number of Households:	8,602
Household Size (pp):	2
Households w/ Children:	2,408

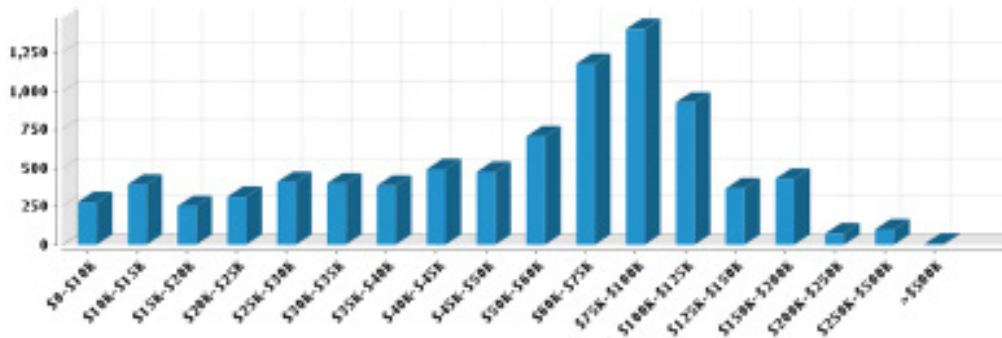
Age



Marital Status



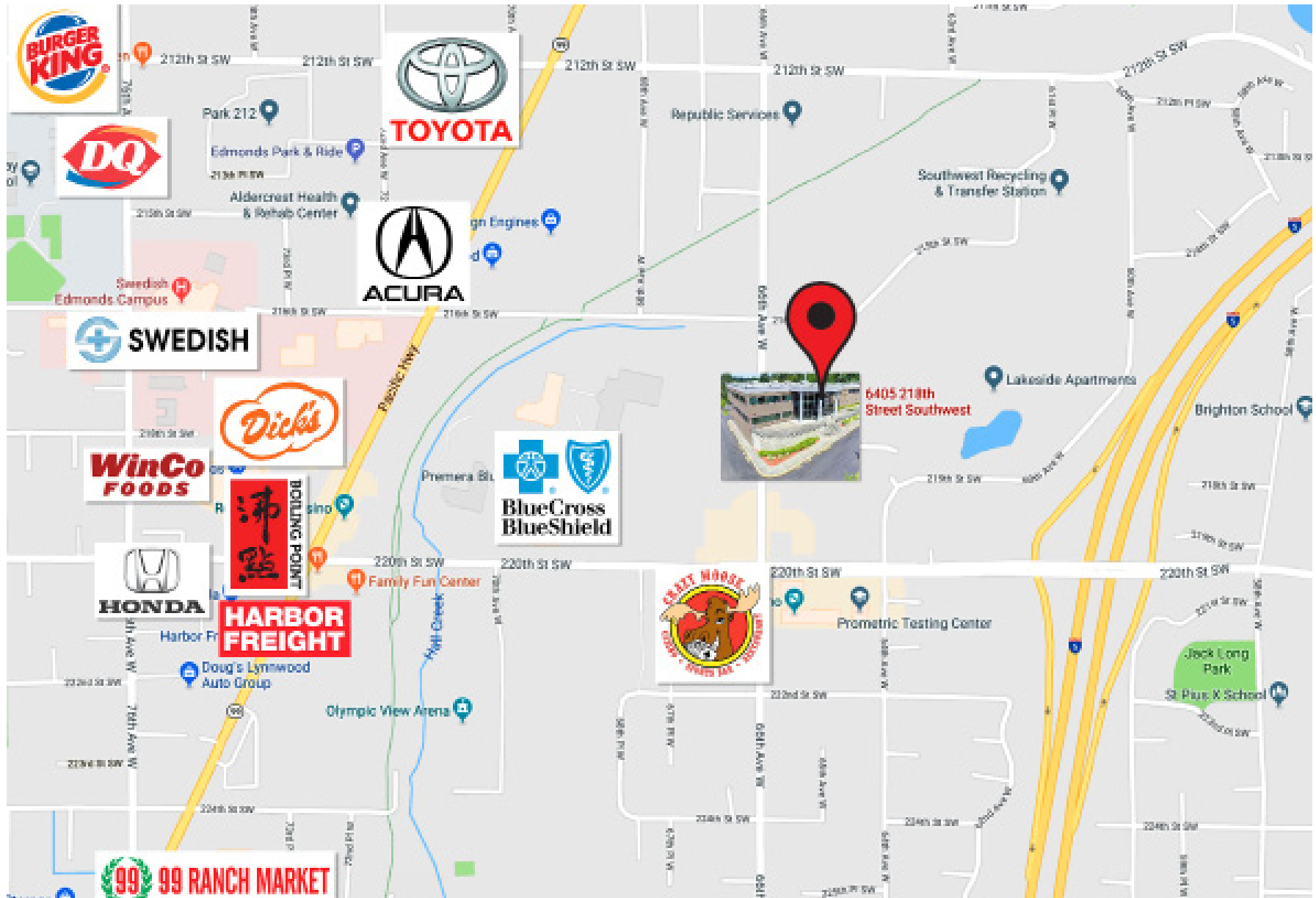
Household Income



Workforce



AERIAL MAP & AMENITIES



MOUNTLAKE TERRACE PROFESSIONAL CENTER

6405 218th St SW, Mountlake Terrace, WA 98043

FOR LEASE: **Suite 201A & 201B \ 3,322 SF – 8,196 SF**

Cal C. Mitchell, CCIM \ Founder & Principal \ 425.922.2886 \ cal@ccmcommercial.com



CCM Commercial

Commercial Real Estate Services