

PRO HAIR SALON

949 6th Street South, Kirkland, WA 98033

FOR SALE

[VIDEO](#)

[MAP](#)



Cal C. Mitchell T 425.922.2886 F 888.417.1792 Cal@CCMcommercial.com

The information contained herein has been obtained from reliable sources but is not guaranteed by CCM Commercial. A prospective Buyer/Tenant should verify each item related to this property and all information contained herein.

agencyone



CCM Commercial

Commercial Real Estate Services



Property Features

FOR SALE

\$55,000 Offering Price

PROPERTY / BUSINESS FEATURES

- Premise Size: 1,506 SF
- 2 Years Remaining on Lease
- One Five (5) Year Option Available
- \$3,138.00 Base Rent + NNNs
- One Block North of Google® Campus
- 6 Hair Stations
- 2 Treatment / Spa Rooms
- 2 Shampooing Stations
- 2 Hair Drying Stations
- 2 Storage Rooms
- Washer & Dryer
- FREE Parking All Around
- Prime Street-Facing Signage
- 35,000+ VPD (Vehicles Per Day)
- Excellent Street Visibility
- Easy Access to 520, 405 & Downtown Bellevue

TOUR INSTRUCTIONS

- Please call Cal at 425.922.2886 to Schedule All Tours
- No Tours Without Listing Agent Present
- Do Not Contact or Disturb Employees

PRO HAIR SALON is located in heart of Houghton Plaza in Kirkland. This major shopping center is one block north of the Google® campus. Excellent street visibility and FREE parking all around. Numerous retail businesses and offices nearby. Minutes from 520, 405, and downtown Kirkland and Bellevue.

Located in the Heart of Houghton Plaza



Houghton Plaza Retail Businesses





Interior Views





Interior Views





Interior Views



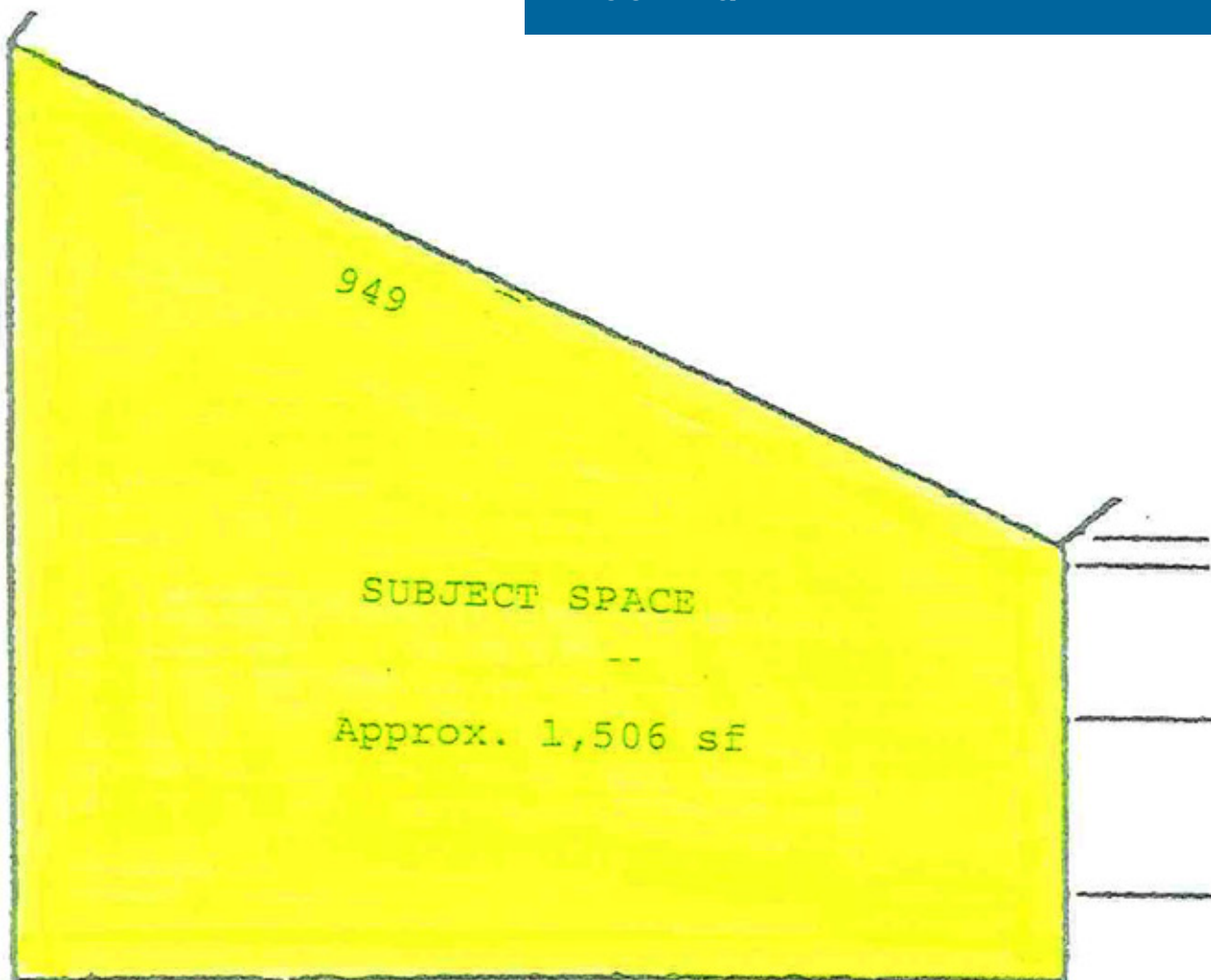


Street Views



Floor Plan

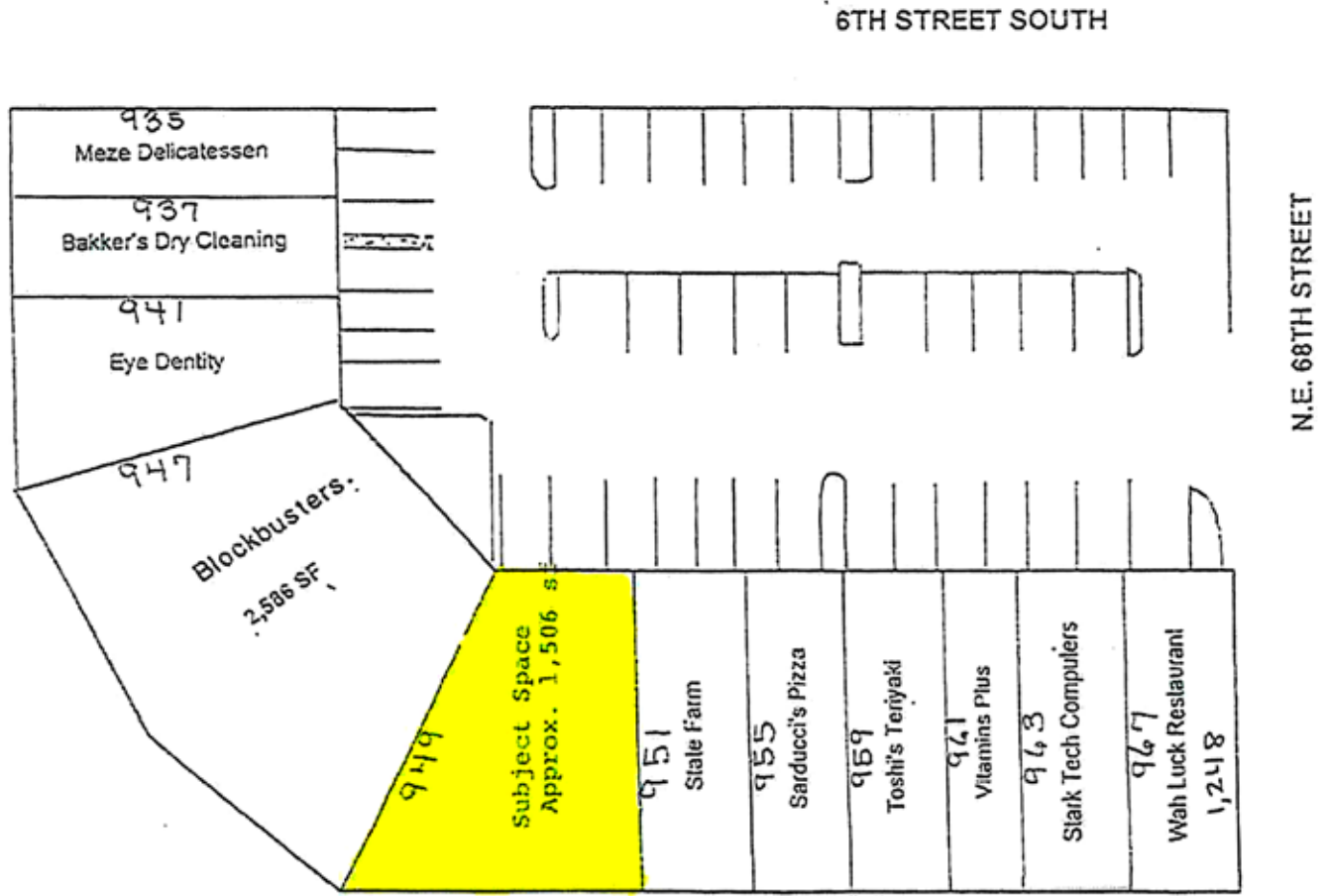
EXHIBIT A
FLOOR PLAN



Site Plan

EXHIBIT B
LEGAL DESCRIPTION AND SITE PLAN

:Houghton Plaza
 :STR 082505 TAXLOT 72 POR TR B
 :SOUTH KIRKLAND ACREAGE & OF NE 1/4
 :OF SW 1/4 SEC 8-25-5 DAF - BAAP



Neighborhood Demographics

Based on ZIP Code: **98033**

Demographics

Population

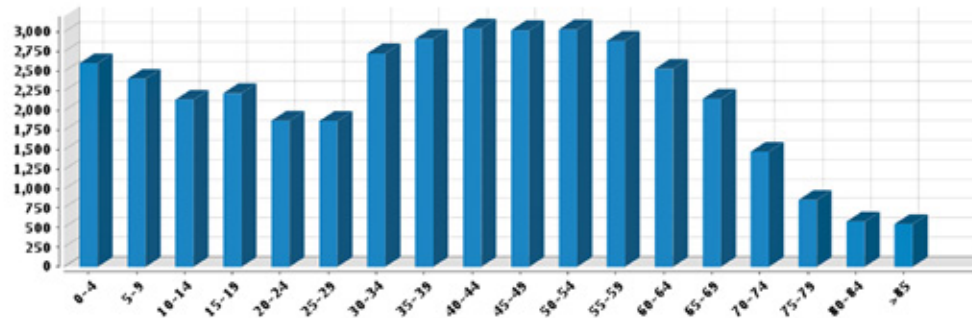
Summary

Estimated Population:	38,879
Population Growth (since 2010):	13.1%
Population Density (ppl / mile):	4,185
Median Age:	41.14

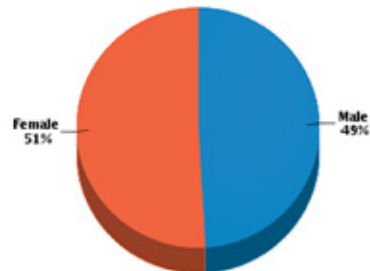
Household

Number of Households:	17,282
Household Size (ppl):	2
Households w/ Children:	4,352

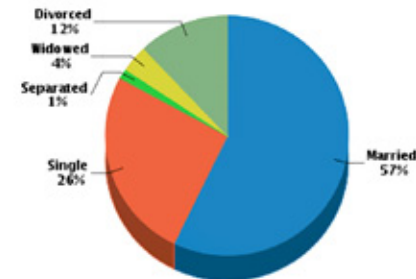
Age



Gender



Marital Status



Aerial Map & Amenities

